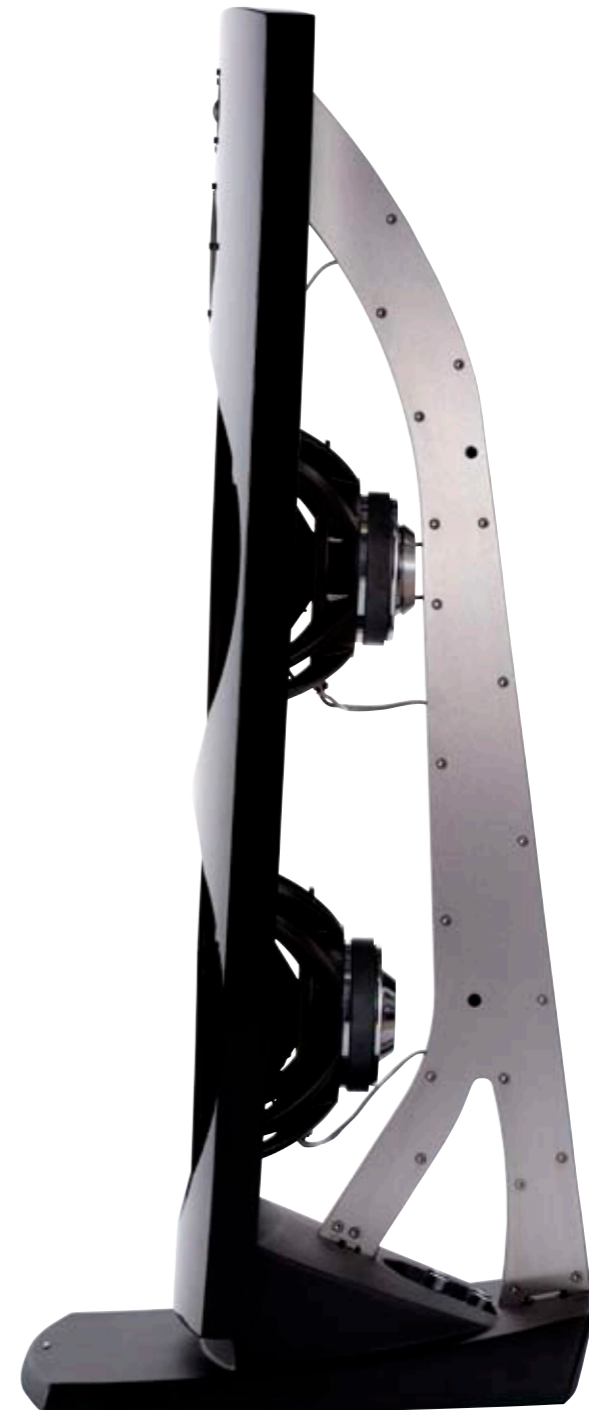


# Let us entertain you

R 909 CATALOGUE



**Jamo**<sup>®</sup>  
Danish Sound Design



Jamo Reference R 909



#### Danish Sound Design

Denmark is world-renowned for its exquisite design. For centuries, Danes have consistently demonstrated a natural aptitude for architecture, construction and design – from wind turbines and bridges, from furniture to opera houses. At the same time, Danish audio companies, such as ourselves, have also established a global reputation as specialists in high quality sound reproduction.

At Jamo, we have spent nearly 40 years re-defining the state of art and developing groundbreaking audio products that reflect our commitment to outstanding technology, craftsmanship and design. Since our founding in 1968, we have continually strived to find and perfect the sound quality of every product that we create. Jamo engineers have developed and tested every system in our own labs, as well as in the types of rooms where the final products will be used.

Cutting-edge technology is but one of the essential elements of our products – another is design. As a Danish company, we have an inherent desire to ensure that all our products maintain the proud Danish traditions of beautiful, yet highly functional, design.

Through the years, Jamo has received widespread recognition in the music world for creating products with a uniquely ‘Danish sound’ – a balance that can best be described as open, clear and coherent, not to mention unfailingly musical. A sound so true-to-life that you feel as though you are a part of it.

As an indisputable proof that we are continuously striving to perfect this ideal it’s our great pleasure to present our latest loudspeaker, a reference model that we think will change the face of the high-end loudspeaker market. A true object lesson in Jamo’s ability to ‘think out of the box’ - literally - please welcome the Reference R 909.

Let us entertain you!



First R 909 prototype



Jamo Reference R 909

#### Stereo speakers worth waiting for

The idea of making a state-of-the-art dipolar loudspeaker is not actually new as the inventor of the new Jamo Reference R 909 stereo speaker, chief acoustic engineer Henrik Mortensen, explains: "I made the first prototype of this kind of loudspeaker about nine years ago but it's taken until now to perfect the speaker and finally turn it into a real product".

#### The important punch in the midriff

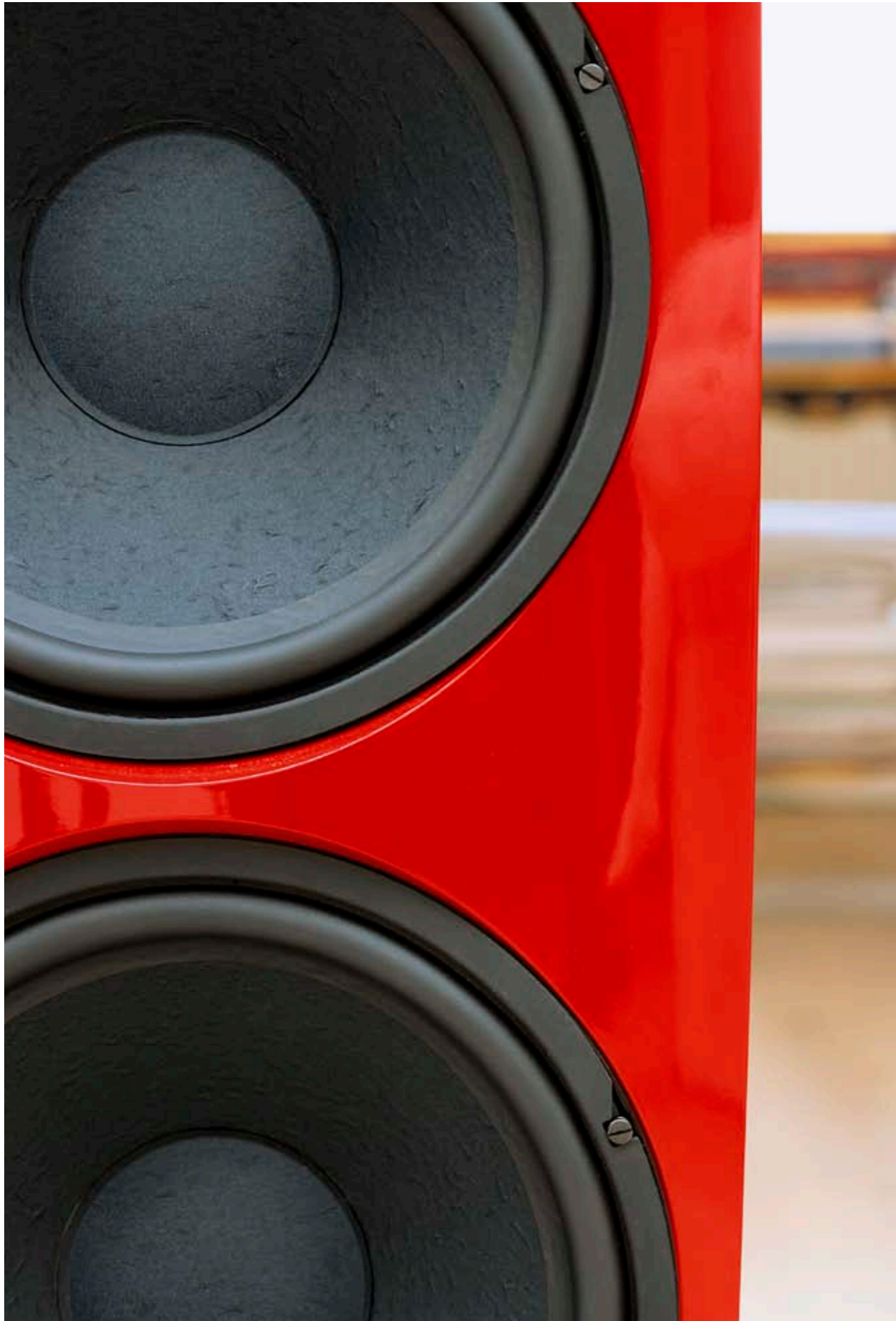
Dipolar loudspeakers have existed for many years, but most examples have been electrostatic-types. While the sonic quality of these designs is often very good the main problem with this type of speaker is bass frequency reproduction is often compromised - they aren't able to produce the characteristic physical bass 'thwack' in your midriff. To solve this problem, Henrik Mortensen decided to use electrodynamic loudspeakers instead of electrostatic ones... the results were amazing.

#### A challenging task

"During the process we faced quite a few challenges", Henrik Mortensen admits. "It was quite a task, to make an elegant and aesthetic design for a loudspeaker of this size. But I think we've succeeded with the Jamo Reference R 909... without compromising performance at all!"

#### Mostly for the connoisseurs

The Jamo Reference R 909 is not designed for a mass-market audience. It is for those who demand an absolutely peak-performance stereo speaker. "The Jamo Reference R 909 has been created for the increasing number of people that prefer a two-channel solution when listening to their favourite music, because of its ability to deliver an exceptional, refined sound experience, and a separate surround sound solution when they want to watch a movie", Henrik Mortensen concludes.



#### **The sound of real life**

With the launch of the Jamo Reference R 909 we offer you the opportunity to experience music, as it should be heard - live!

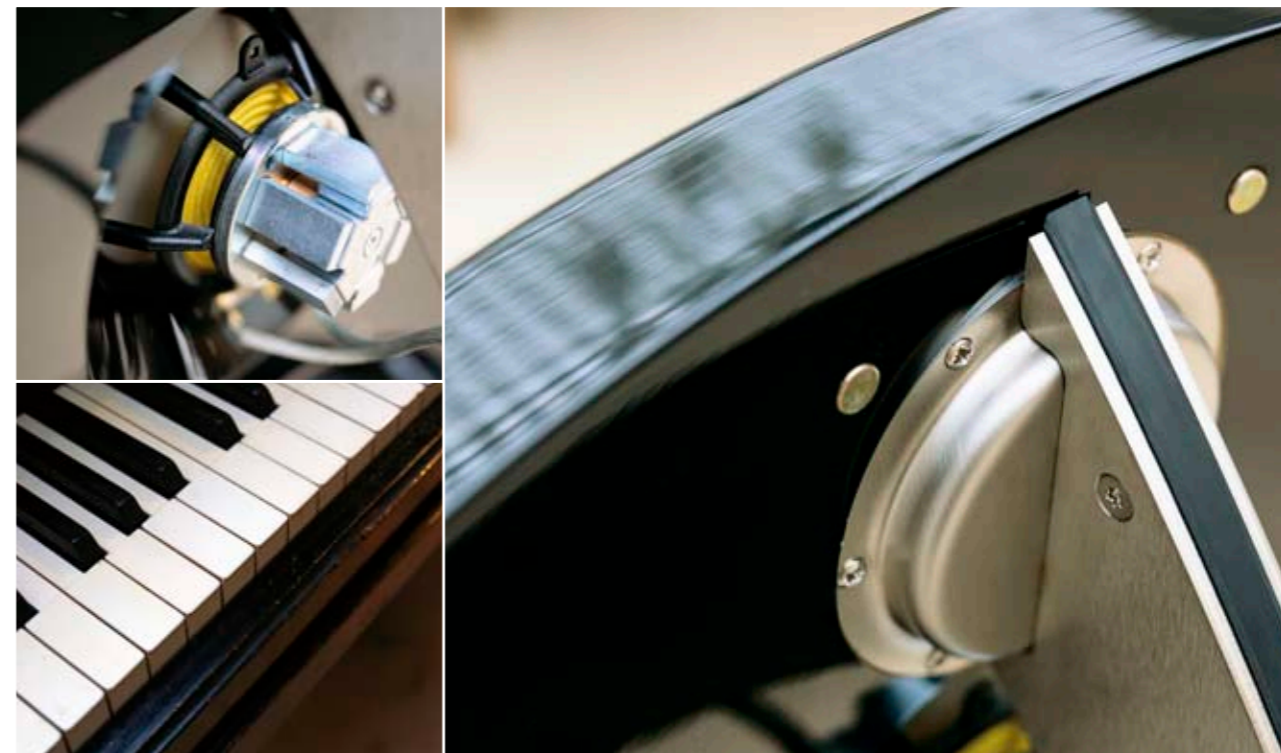
This revolutionary new floor-standing dipolar loudspeaker employs two massive 15in woofers, a Seas magnesium midrange driver and a customized Scan Speak Revelator tweeter, all mounted in a 43mm thick baffle made of a unique multi-ply construction... this is a speaker that is set to change the face of the high-end speaker market.

#### **The perfect match**

The R 909 is the perfect match for the highest quality amplifiers on the market. However, with a high sensitivity of 89dB and offering a very

stable load at 4ohms it doesn't need a power plant to drive it... although it will handle more than 800 Watts of peak power if you really want to go there!

The design and drivers used reproduce wonderfully transparent vocals and a response so dynamic that it's hard to believe that you're actually listening to a speaker. The exceptionally firm bass, blessed with immense transient speed, precision and fluidity throughout the frequency range (and absolutely no colouration or reverberation) simply puts you in the middle of the sound experience.



#### Details that make a big difference

##### Heavyweight posts

The 26kg cast-iron base houses matt-chromated bi-wireable binding posts that connect directly to the crossover network placed inside the base, so securing the best possible signal path.

##### Special designed woofers

Most woofers are developed to work in a cabinet, and as a woofer constructed for a dipole application is very different from a traditional boxed one we had to develop a special woofer for this open-baffle application. These huge bass drivers employ high quality magnesium baskets plus lightweight, air-dried paper cones with a rubber suspension. The time-consuming process of letting the cones air-dry - instead of just pressing out the water in the former - has resulted in a thicker, and thus more rigid, material for the same low weight. Although paper cones might be out of fashion in some circles they have the ability to start/stop moving incredibly quickly, can reach very, very deep and they endow the drive unit with great sonic precision and musicality.

##### Highly advanced midrange driver

In order to fulfil the R 909 brief we also had to use state-of-the-art technology for the midrange driver. Employing a patented Neodymium magnet arrangement, the Seas unit uses a magnesium cone for its stiffness and low weight, both vital qualities for dynamic response. Thanks to the HCC (Hard Conical Cone) technology the driver is able to reach all the way to 9kHz before any significant cone break-ups occur.

This makes for extremely low distortion throughout the range plus a very open and detailed midrange for optimum voice reproduction. Turned from solid brass the centre-plug has a cooling effect on the voice-coil, providing greater power-handling capability and most importantly, extra sonic stability when playing at high volume levels.

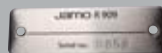
##### The legendary Revelator from Scan Speak

Above 2000 Hz it's the turn of the superior Revelator tweeter to take over. This incredible unit features a textile dome that's coated several times which results in an incredibly smooth, linear, dynamic and breathtakingly transparent sound. The tweeter's Symmetric Drive technology practically eliminates electrical phase shift and lowers distortion significantly. Finally, there's a double-damped chamber behind the magnet system, equipped with an anti-resonator plug to eliminate turbulence.

##### What's in it for you...

With the Reference R 909 we offer you a true high-end speaker that's amazingly easy to drive. The sonic performance is absolutely exquisite – firm, accurate and with sublime attack, precision and dynamics. Not to mention a total absence of unwanted colouration and reverberation.

When listening to the Reference R 909 you can forget everything about technology, speakers and equipment! Instead, just enjoy what it's all about: – a jaw-droppingly authentic musical experience!



Customize your R 909 by engraving your name on the exclusive stainless steel serial number badge.

**Specifications:**

Type .....	R 909
System .....	.3-way dipole
Woofer (In/mm) .....	.2 x 15 / 2 x 380
Midrange (In/mm) .....	.5 ½ / 150
Tweeter (In/mm) .....	.1 / 25
Short term power (W) .....	.Min 800
Sensitivity (dB – 2,8V / 1m) .....	.89
Frequency range (Hz) .....	.25 – 30.000
Impedance (Ohm) .....	.4
Crossover frequency (Hz) .....	.250 / 2,000
Weight (Kg / lbs) .....	.63.1 / 139.1
Dimensions (HxWxD/mm/in) .....	.1276 x 488 x 541
	.50.2 x 19.2 x 21.3
Finish .....	Piano Black
	High Gloss Yellow
	High Gloss Red

**Jamo**<sup>®</sup>  
Danish Sound Design

[www.jamo.com](http://www.jamo.com)